

ขอยโซ่ (CHAIN COUPLING)



MADE IN TAIWAN

edit 11/06/65

MODEL	PRICE	MODEL	PRICE
KC - 3012	860	KC - 8018	5,880
KC - 4012	1,000	KC - 8020	7,560
KC - 4014	1,150	KC - 8022	8,190
KC - 4016	1,260	KC - 10020	19,425
KC - 5014	1,575	KC - 12018	25,200
KC - 5016	1,785	KC - 12022	36,750
KC - 5018	1,995	KC - 16018	63,000
KC - 6018	3,255	KC - 16022	103,950
KC - 6020	3,990	KC - 20018	204,750
KC - 6022	4,200	KC - 20022	283,500

Material

1. sprocket: C45 steel. HRC 40-50.

2. chains: alloy steel.

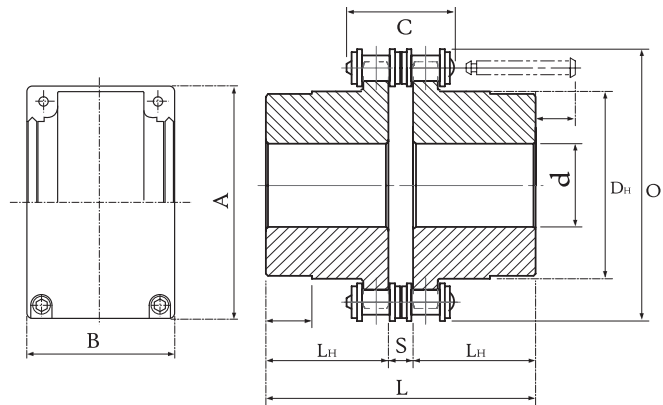
- link joint: 40Mn

- pin roll: 30CrMnTi or 40 Cr

- running pulley: M10 or M20

- sleeve: M10

3. shell: aluminum.



Chain Coupling Number	Chain pitch	Coupling									Casing			
		Drill hole	Shaft diam.		O	L	D _H	L _H	S	C	Approx weight (kg/m)	A	B	Approx weight (kg/m)
			Min.	Max.										
KC 3012	9.525	12	13.5	16	45	65	27.2	29.5	6	10.1	0.31	69	63	0.22
KC 4012	12.70	12	14	22	62	79.4	36	36	7.4	14.4	1.12	84	75	0.31
KC 4014		12	14	28	69	79.4	45	36						
KC 4016		13.5	16	32	77	87.4	51.5	40						
KC 5014	15.875	14.5	17	35	86	99.7	56	45	9.7	18.1	2.15	101	85	0.47
KC 5016		14.5	18	40	96	99.7	64	45						
KC 5018		16	18	45	106	99.7	73.5	45						
KC 6018	19.05	20	22	56	127	123.5	89.5	56	11.5	22.8	6.55	147	105	1.2
KC 6020		20	24	60	139	123.5	102.5	56						
KC 6022		20	28	71	151	123.5	115	56						
KC 8018	20.40	20	32	80	169	141.2	115	63	15.2	29.3	13.2	190	129	1.9
KC 8020		20	36	90	185	145.2	125	65						
KC 8022		20	40	100	202	157.2	142	71						
KC 10020	31.75	25	45	110	233	178.8	162	80	18.8	35.8	32.4	281	153	4.1
KC 12018	38.10	35	50	125	256	202.7	173	90	22.7	45.4	43.2	307	181	5.2
KC 12022		35	56	140	304	222.7	213	100						
KC 16018	50.80	-	68	160	341	360.1	220	165	30.1	58.5	122	402	240	9.6



บริษัท แอดวานซ์ อินดัสเทรียล เซอร์วิส จำกัด
 38/1 หมู่ 6 ตำบลพระยาพิชัย อำเภอสงขลา จังหวัดสงขลา 90110
 Tel. 036-670-573 E-mail : advance.saraburi@gmail.com



www.adv-in.com